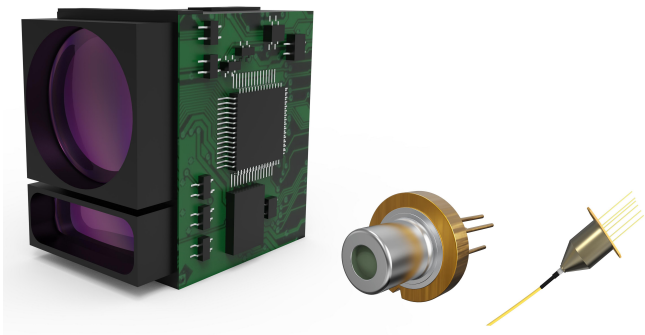


1550nm 激光测距仪 1550nm Laser Rangefinder

1550nm 波长激光测距仪一般采用光纤激光器作为光源，搭配 InGaAs 接收器，提高了接收信号的光功率且不会对人眼造成伤害，对于安全驾驶具有至关重要的意义，能够在应用中实现更远的探测距离、更加精细的物体障碍识别，从而给人和车辆创造更多的反应时间，提升自动驾驶的安全性和舒适性。

The 1550nm Laser Rangefinder generally adopts fiber laser as the light source, combined with InGaAs receiver, which improves the optical power of the received signal and does not cause harm to human eyes. It is of vital significance for safe driving and can achieve longer detection range and more refined object obstacle recognition in application. Thus creating more reaction time for people and vehicles and improving the safety and comfort of autonomous driving.



抗干扰能力强

Strong anti-interference capability

探测距离远（10 米-5000 米）

Long detection range(10m-5000m)

探测精度高（可精确至 0.1 米）

High detection accuracy(up to 0.1 m)

满足人眼安全要求

Meet human eye safety requirements

自动驾驶

Automatic drive

自主移动机器人

Autonomous mobile robot

虚拟现实/增强现实

VR/AR

无人机

Drone

特
征
Features

应
用
Application

应用示例 Application Example



自动驾驶
Automatic drive



自主移动机器人
Autonomous mobile robot



虚拟现实/增强现实
VR/AR



无人机
Drone